



Foundations In Faith

"May Christ dwell in your hearts through faith and may charity be the root of your life." Eph. 3:17

Fall/Winter 2010

Keeping the "Catholic" Faith

Recently, a local family with a history for generosity to the Catholic Church has once again shared a gift that will benefit the lives of fellow Christians. Out of love for his family and faith, Richard Lipford established a revocable living trust that he used during his lifetime, but which would also ultimately carry out many of his wishes to benefit and provide for others. Upon his death the trust became irrevocable and provided financial benefits for his two sisters, Mary and Frances. With the money provided to them through the trust, the two sisters were able to move into a safe and comfortable assisted living facility. They were quite grateful for this financial support. Eventually, when the sisters joined Richard in eternal life his trust again flowed with benefits for others, specifically his nephew Patrick and the local Catholic community. By naming his nephew and his church as remaining beneficiaries, Richard completed a life-time gift.



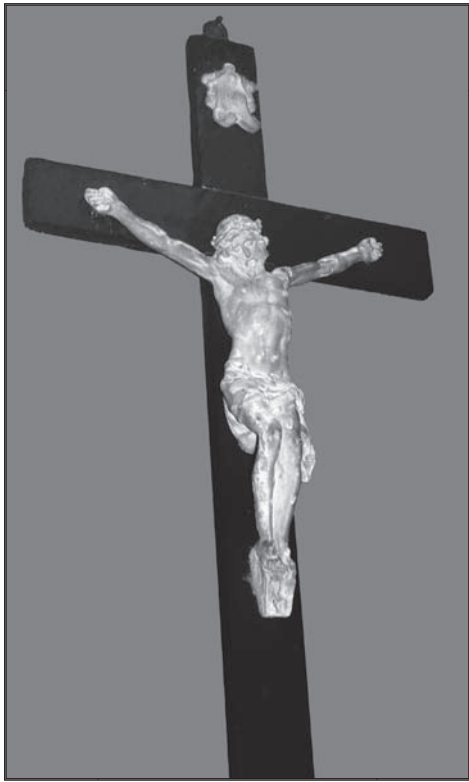
What Richard did was in keeping with the example of generosity exhibited by his family in past generations. Starting with recent history, his two sisters, Mary and Frances, had already donated to the Diocese. The gift from the Lipford sisters both preserved family history and Tennessee history. The heirloom donated to the Diocese is a good backdrop for relating the history of Catholics in Memphis and the state of Tennessee.

Like many Tennessee families, the Lipfords can trace the arrival of their family here back to the 19th Century. That was a time in which local Catholics depended on circuit riding priests to bring the Mass to a scattered congregation. The Lipford ancestors

opened their doors to other Catholics, providing both space and resources for the celebration of Mass.

John Pigott, the great-grandfather of Frances and Mary Lipford came from County Cork, Ireland to New Orleans in the late 1840's. However, within two years, he had relocated his family to a farm near modern day Bethel Springs. As faithful Catholics, who lived in a

continued



town without a church, the family looked forward to the arrival of circuit riding priests who would celebrate the Mass. Those visits often occurred only every three or four months due to the distances involved and the small number of priests available. Dominican missionaries from Kentucky and diocesan priests from Nashville made the difficult trek through Tennessee's woods to serve the mission territory. They relied on local Catholics to provide a place and resources to celebrate Mass. To meet the need, the Pigott family designated a chest to serve as an altar and they donated a set of candle holders and a crucifix. These are the irreplaceable pieces that the Lipford sisters donated to the Catholic Diocese. The pieces are on display in the front lobby of the Catholic Center.

Looking at these heirlooms, any viewer can see the objects were well-used but lovingly handled by the family. Mary and Frances Lipford described how the crucifix hung over the chest and was a focal point for daily prayers in the household. The Lipfords also point out that one of the feet on the corpus is worn. They ex-

plained that their grandfather, as a gesture of prayer and respect, daily touched the foot of Christ. This example of loving and reverent behavior modeled a faith life which assured that future generations would both know and follow their faith.

As past generations like the Pigotts and Lipfords moved into West Tennessee, populations grew large enough to build and sustain churches. After the Civil War, parishes were staffed largely by immigrant priests from Ireland, Italy, or Germany. This phase in rebuilding brought new challenges. The population needed more access to transportation and railroads were the best choice for the time in history. There was an influx of migrant railroad workers. Instead of ministering to a stable population of farm families and city dwellers, transient labor pools made of immigrant Irish needed priests, too. Mission stations were established and served by priests at the temporary base camps of the workers. St. Mary's in Jackson benefited from this influx of Irish Catholic immigrants, and two of the oldest West Tennessee churches outside Memphis and Jackson, Sacred Heart in Humboldt and Immaculate Conception in Union City, owed their starts to this influx of immigrants.

By the turn of the century enough Catholic families lived in the area to contribute to a development of home-grown vocations. Native Tennesseans were ordained and began to staff parishes in the state. However, until the Diocese of Memphis was formed in 1971, much of rural West Tennessee remained mission territory.

Throughout the decades, families such as the Lipfords and Pigotts helped to maintain a stable Catholic presence in West Tennessee. Their personal acts of generosity, such as donation of family heirlooms and finances, serve as a reminder that Catholics have been present and active throughout Tennessee's history. Their family's gifts have helped to provide a place for others to worship, whether that was inside their home on a make-shift altar, or is inside one of our modern churches which will benefit from their financial contributions.

If you would like to share your family's Foundation in Faith, please contact David Cremerius, Director of Planned Giving, at (901)373-1273.



Will, Trust or the State?

Have you started planning your affairs only to be confused by which instrument, a will or a trust, is best for your family? Creating a plan will allow you to provide for you and your loved ones as well as making charitable bequests. However, if you do not create a will and you use the plan provided by the state of Tennessee, you may not be pleased. The state has rules of intestate succession that dictate how your things will be distributed if you do not have a plan. So whether your family needs will best be met by a Will or a Trust is not as important as getting the process started. We will be happy to assist if you have questions about the pros and cons of wills and trusts. Your legal advisor will also be able to provide guidance and insight. Feel free to contact David Cremerius, Director of Planned Giving, for more information.

Free Will Planning Assistance

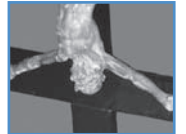
In working with donors, we have found that getting started with a plan is the most challenging step. To help, we will be happy to provide you with a free Will Planning Booklet. Simply return the enclosed card or contact David Cremerius, Director of Planned Giving, at (901)373-1273 or david.cremerius@cc.cdom.org.

This publication is designed to provide accurate information in regard to the subject matter covered. It is offered with the understanding that the publisher, editor, and contributors are not engaged in rendering legal, accounting and other professional service. Any examples given are for illustrative purposes only based on IRS tables and regulations in effect at the time of publication. For advice and assistance in specific cases, the services of your own counsel should be obtained.

Foundations In Faith



Keeping the "Catholic" Faith



ADDRESS SERVICE REQUESTED

Memphis, TN 38184-1669
P.O. Box 341669
5825 Shelby Oaks Drive



Non-Profit
Organization
U.S. Postage
PAID
Memphis, TN
Permit No. 605